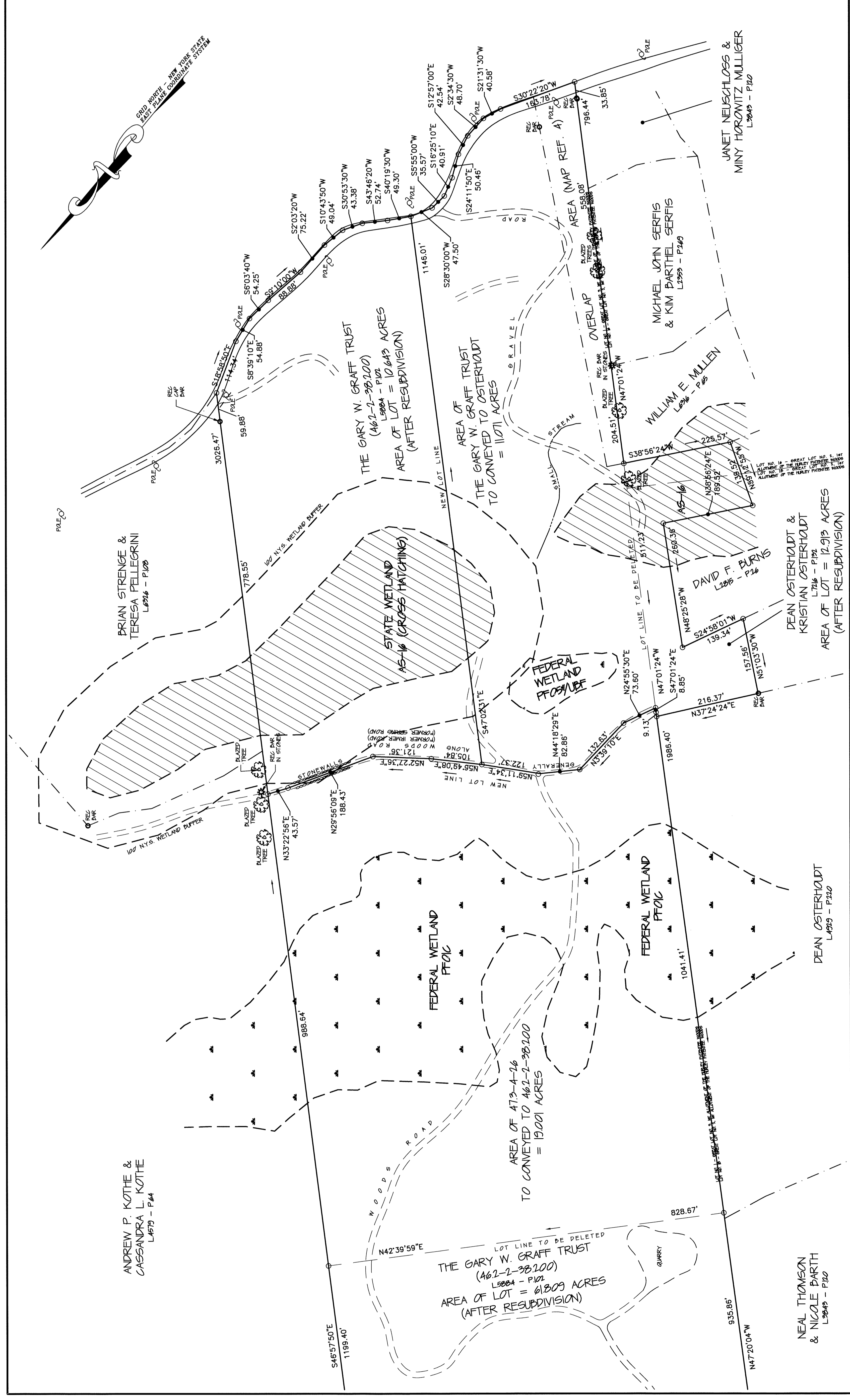
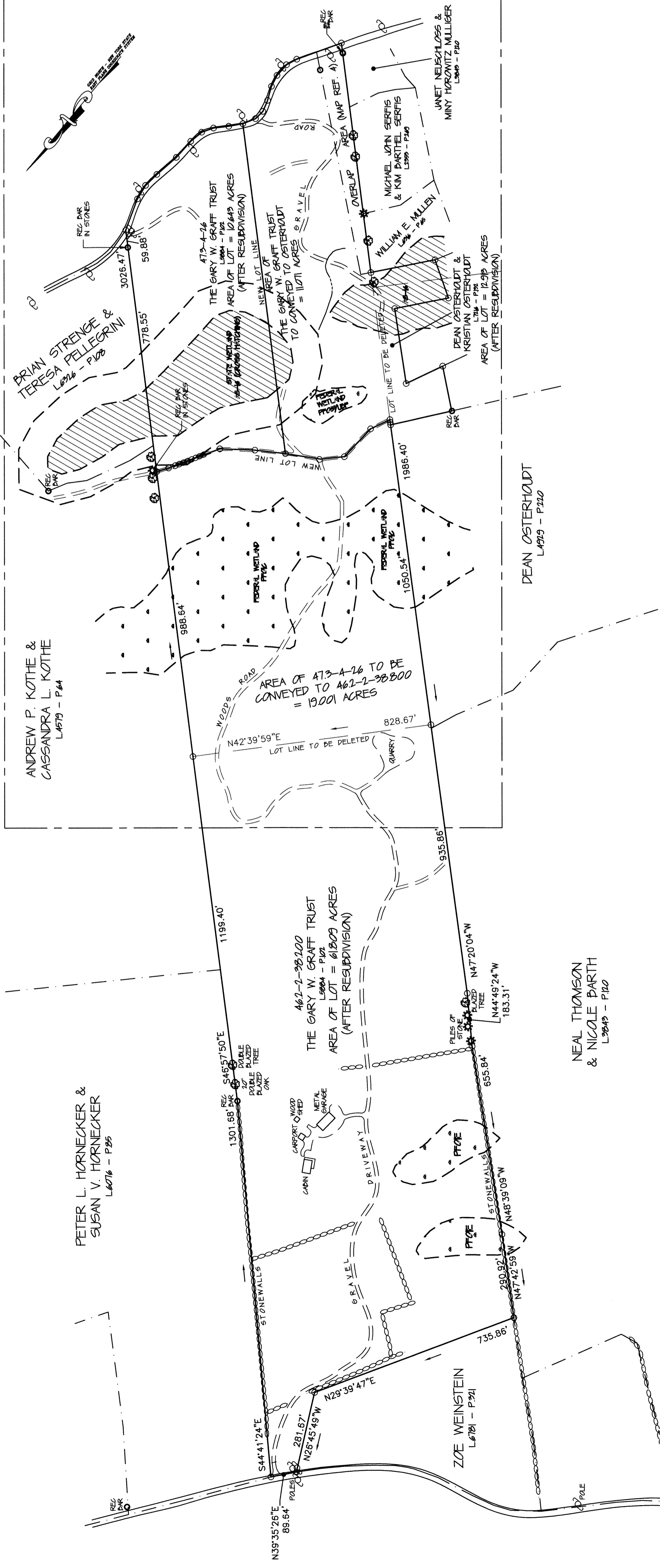


LOCATION MAP
SCALE: 1" = 2,000'

RESUBDIVISION AREA SUMMARY

LANDS OF THE GRAFF TRUST (46.2-2-38.200) BEFORE RESUBDIVISION
LANDS OF THE GRAFF TRUST (47.3-4-26) TO BE CONVEYED TO THE GRAFF TRUST (46.2-2-38.200)
LANDS OF THE GRAFF TRUST (46.2-2-38.200) AFTER RESUBDIVISION
LANDS OF THE GRAFF TRUST (47.3-4-26) BEFORE RESUBDIVISION
LANDS OF THE GRAFF TRUST (47.3-4-26) TO BE CONVEYED TO THE GRAFF TRUST (46.2-2-38.200)
LANDS OF THE GRAFF TRUST (47.3-4-26) AFTER RESUBDIVISION
LANDS OF OSTERHOUDT BEFORE RESUBDIVISION TO BE CONVEYED TO OSTERHOUDT
LANDS OF THE GRAFF TRUST (47.3-4-26) TO BE CONVEYED TO OSTERHOUDT
LANDS OF OSTERHOUDT AFTER RESUBDIVISION

42.808 ACRES
+19.001 ACRES
61.809 ACRES
40.715 ACRES
-19.001 ACRES
-11.071 ACRES
10.643 ACRES
1.841 ACRES
+4.071 ACRES
12.572 ACRES



PLANNING BOARD APPROVAL
APPROVED BY THE PLANNING BOARD OF THE TOWN OF HURLEY, ULSTER COUNTY, NEW YORK
DATE: _____
MEMBER: _____
MEMBER: _____

OWNERS' CONSENT TO FILE
I HEREBY GRANT MY APPROVAL OF THIS PLAN AND CONSENT TO THE FILING OF IT IN THE ULSTER COUNTY CLERK'S OFFICE.

TOWN ZONING INFORMATION

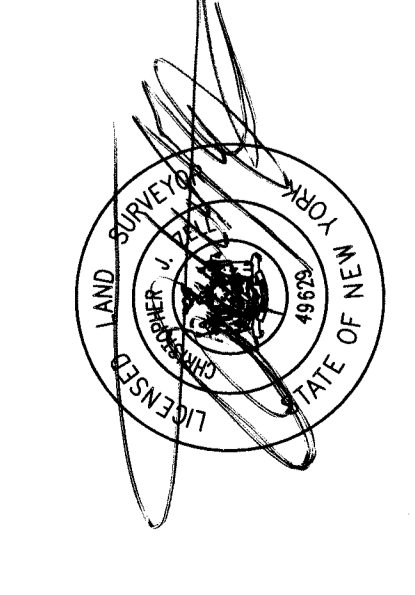
DISTRICT: A-2.5 LOW DENSITY RESIDENTIAL
MINIMUM LOT SIZE: 2.5 ACRES
MINIMUM LOT PER DWELLING UNIT: 2.5 ACRES
MINIMUM LOT WIDTH: 200 FEET
MINIMUM SETBACKS: FRONT YARD: 50 FEET
MINIMUM SETBACKS: SIDE YARD: 25 FEET
MINIMUM SETBACKS: REAR YARD: 25 FEET
MINIMUM BUILDING HEIGHT: 10 FT
MINIMUM LOT COVERAGE: 10 %
MINIMUM GREEN SPACE: 40 %

MAP REFERENCES
1. MAP OF THE LANDS OF THE GARY W. GRAFF TRUST ARE BASED ON "MAP OF RESUBDIVISION PREPARED FOR THE ESTATE OF GARY W. GRAFF DATED MAY 15, 2012, AS AMENDED BY MAP NO. 46.2-2-38.200, ULSTER COUNTY CLERK'S OFFICE DECEMBER 17, 1998 AS MAP NO. 11240.
2. MAP OF THE LANDS OF THE GARY W. GRAFF TRUST (47.3-4-26) OSTERHOUDT ARE BASED ON A MAP ENTITLED "BOUNDARY AND SURVEYS" DATED MAY 15, 2012.
3. "MAP OF SURVEY OF DIVISION OF LAND OF EDWARD DONNELLY," AS AMENDED BY MAP NO. 47.3-4-26, ULSTER COUNTY CLERK'S OFFICE DECEMBER 17, 1998 AS MAP NO. 11240.
4. JOHN V. G. RABALA, P.E., A.L.S. DATED JUNE 16, 1970 AND FILED AUGUST 9, 1978 AS MAP NO. 3698.

NOTES
1. FEDERAL AND STATE WETLANDS ARE INTERPOLATED FROM THE "NATIONAL WETLANDS DATA" AND "STATE WETLANDS DATA" AND ARE NOT GUARANTEED TO BE ACCURATE.
2. FEDERAL WETLANDS ARE INTERPOLATED FROM THE "NATIONAL WETLANDS DATA" AND "STATE WETLANDS DATA" AND ARE NOT GUARANTEED TO BE ACCURATE.
3. FEDERAL WETLANDS ARE INTERPOLATED FROM THE "NATIONAL WETLANDS DATA" AND "STATE WETLANDS DATA" AND ARE NOT GUARANTEED TO BE ACCURATE.
4. FEDERAL WETLANDS ARE INTERPOLATED FROM THE "NATIONAL WETLANDS DATA" AND "STATE WETLANDS DATA" AND ARE NOT GUARANTEED TO BE ACCURATE.

MAP
OF RESUBDIVISION OF LANDS OF
THE GARY W. GRAFF TRUST
AND RESUBDIVISION OF LANDS OF
**DEAN OSTERHOUDT &
KRISTIAN OSTERHOUDT**

275 SPILLWAY ROAD AND 49 & 53 BUNDY LANE
TOWN OF HURLEY ULSTER COUNTY NEW YORK
JUNE 28, 2023 SCALE: 1" = 200'



BRINNIER & LARIOS, P. C.