



The Hurley Recycler

Supervisor: Gary Bellows
Solid Waste Mgr: Jim Craven
PO Box 569 Hurley, New York 12443
845 331-7474

#64 Spring 2010

From the Recreation Department

2010 Events

April 2 Easter Egg Hunt
April 17 NYC Do Your Own Thing Trip \$20
May 2 Bronx Zoo / Botanical Gardens \$20
May 31 Memorial Day Parade
July 21 NYC Do your own thing \$20
Aug. 31 US Open Tennis \$60 (est.)
Nov. 20 Radio City Christmas Show \$70 (est.)
Dec. 4 NYC Do Your Own Thing \$20
Watch for Mohegan Sun Aug 3; Saratoga Aug 19 or 26;
Shopping in late August
Please check our website for new events and information www.townofhurley.org
I am still working on the community yard sale and need volunteers for the committee.
So far I have one...anyone else interested?



Summer Program

Date: July 6 – 29, 2010
Cost: Free to Hurley Residents
Transportation: \$ 20 for 1child; \$25 for family
Camp Trips:*

- July 7 Amazon Detours or Rip Van Winkle & Trolley Ride
- July 14 Zoom Flume
- July 21 Putt N Plus
- July 28 Skatetime
- July 29 Bellayre Beach & Picnic

*(subject to change slightly)

You will be able to download all forms and register by mail (sorry not email yet) in early April. We will still have a registration day in late spring as well.

I have secured a spot on the bulletin board at West Hurley Library, and Hurley Reformed Church and hope to be at Hurley Library as well. If you know of a good spot for our fliers please let me know, and be sure to look for our bright green fliers. As always if you have any ideas or thoughts about events you would like to see or have please let me know.

Shirley Paley 331-7474 ext. 313



SOLID WASTE DEPARTMENT

Jim Craven, Solid Waste Manager

New Services

Starting in April the Transfer Station will offer two new services- fluorescent lamp recycling and wet paint processing.



Fluorescent lamps require special handling as they contain small amounts of mercury. If the lamps are broken the mercury is released into the environment and this is to be avoided. To facilitate safe recycling we have set up receptacles near the cashier's booth. The recycling charge is \$1.50 for 4 foot lamps and \$3.50 for 8 foot lamps. CFL's, the spiral lamp, can be taken to Home Depot's return counter for no charge. The Transfer Station will not accept broken lamps.

Only dry paint can be disposed of in the waste containers. Wet paint must be dried before disposal and this has been a problem for many of our residents. To assist our customers, the Transfer Station will dry and dispose of wet latex paint for \$2.00 per gallon. All paint drop-offs must be done at the cashier's booth where dry and wet latex paint can be processed. Oil based paint and hazardous coatings will be returned to the resident to be disposed of at the next Household Hazardous Waste Day.

Spring & Summer Schedule

Our summer schedule will be in effect from April 1 to November 1. The Transfer Station will be open Mondays 9am to 3pm, Tuesdays 9am-6pm, and Fridays 9am-3pm and Saturdays 8am-3pm

HHW, Electronics & Pharmaceuticals

This one day event will be held on April 17 at the UCRRA facility on Route 32 just 2/10 of a mile south of Route 199. Hours are 8am to 1pm for household hazardous waste, electronics and pharmaceuticals. Pharmaceuticals are new this year and provide a safe disposal for outdated and surplus drugs. Flushing drugs down the drain are no longer acceptable due to potential effects on aquatic life. Also, there is a \$7.00 per car load fee for electronics. Bring a check, no cash is accepted. Call 336-3336 for an appointment or register a www.ucrra.org.

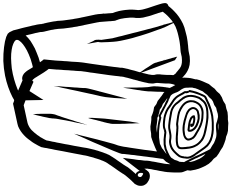


Acceptable Electronics: Monitors, CRT's, CPU's, VCR's, telephones, keyboards, typewriters, cables, modems, terminals, printers, copies, fax machines, mainframes.

Acceptable HHW: Any waste produces in the home that is toxic, flammable, corrosive, reactive or explosive.

Unacceptable HHW: Empty containers, detergents, alkaline batteries, controlled substances, medical and biological waste, radioactive waste, asbestos, automotive oil and explosives.

For a complete listing go to www.urra.org



Logs & Brush

Log and brush pile is susceptible to contamination by painted or treated wood, metal and plastic. This contamination by careless customers increases cleanup costs and decreases the quality of our mulch. Poor quality mulch affects our ability to sell mulch at a reasonable price. Mulch sales are used to offset the cost of wood grinding.

Tree trunks and limbs over 4 inches in diameter are considered logs and will be ground up for mulch along with brush. Logs, however, must be less than six feet long and less than 24 inches in diameter. Logs over 24 inches in diameter can be accepted if cut into lengths of 24 inches or less.

Brush

The brush from-off fee and permit requirements for brush will be suspended from April 17 through May 15. Brush includes branches and limbs less than 4 inches in diameter.

Litter



To encourage volunteers to pick up roadside litter, the disposal fee for litter will be waived during April, May and June. Free collection bags will be available at the transfer station.

Loading

We pay a transportation fee every time a roll-off container is pulled. To contain these costs and keep our disposal fees down we need to maximize the loads. Here is how you can help:

- ❖ Step on and flatten plastic bottles & jugs
- ❖ Flatten all cardboard boxes
- ❖ Break down bulk furniture & like items
- ❖ Roll up rugs and floor fabrics.
- ❖ Place long items-limber, rolled rugs, etc., parallel to the roll-off container's side walls.

Hurley Recycles



Hurley continues to recycle at an impressive rate, 53.81% in 2009. There was a decrease in all materials, both recyclables and waste. However permit sales remain the same so we must conclude that the economy or increased interest in waste reduction is at work.

| UCRRA Materials | 2007 | 2008 | 2009 |
|------------------|--------|--------|--------|
| Comm. Containers | 106.63 | 104.53 | 106.44 |
| Newspaper | 147.09 | 214.75 | 188.01 |
| Cardboard | 96.57 | 78.24 | 63.79 |
| Waste Mail | 92.26 | | |
| Sub Total | 44.55 | 397.52 | 358.24 |

| Hurley Materials | 2007 | 2008 | 2009 |
|------------------------|--------|--------|--------|
| Auto, Anti-freeze | 0.00 | 0.90 | 0.55 |
| Auto, fliters | 1.25 | 0.30 | 0.45 |
| Auto, oil | 5.29 | 7.13 | 4.93 |
| Auto, tires | 5.86 | 15.15 | 6.50 |
| Batteries, Auto | 3.20 | 2.68 | 3.80 |
| Batteries, Rechargeabl | 0.01 | 0.04 | 0.02 |
| Mulch, Logs,Brush | 200.00 | 200.00 | 108.00 |
| Compost, Tard waste | 160.00 | 155.00 | 150.00 |
| Electronics | 14.75 | 17.20 | 10.00 |
| Metal, Ferrous | 90.82 | 74.97 | 52.40 |
| Metal, Other | 0.60 | 1.20 | 3.04 |
| Polystyrene Peanuts | 0.10 | 0.10 | 0.10 |
| Rubble | 30.00 | 30.00 | 30.00 |
| Textiles | 4.00 | 4.00 | 4.00 |
| Sub Total | 516.00 | 508.67 | 374.12 |

| | | | |
|-------------------|--------|--------|--------|
| Tons Recycled | 958.55 | 906.19 | 732.36 |
| Tons Waste | 657.25 | 648.89 | 628.71 |
| Percents Recycled | 59.32 | 58.27 | 53.81 |

Recycling Electronics

The Hurley Transfer Station has now completed three years of electronic waste recycling. We weigh the electronics and charge accordingly, but divert the electronics for recycling. The fees collected will pay for the cost charges by a certified recycler. We can handle electronics every day that we are open. In 2007 we recycled 14.7 tons of electronics; in 2008 we recycled 17.2 tons. In 2009 we recycled 10.33 tons.

From the Building Department

It's that time of year again...**Flooding**... The Ulster County Emergency Service Department has supplied the following preparedness information with regards to Flooding. If you are outdoors, Get to higher ground. Watch out for washed out roads, earth slides, broken water or sewer mains, loose or downed electric wires and falling or fallen objects. Do not attempt to drive over a flooded road. Most



flash flooding deaths occur in automobiles. If you are under shelter, find out how many feet your property is above and below possible flood levels. Keep materials like sandbags, plywood, plastic sheeting and lumber handy for emergency water-proofing. If you are in a multi-story dwelling, move essential items and furniture to upper floors. Disconnect electric appliances that can't be moved.

DO NOT touch them if you are wet or standing in water. It is a good idea to have a Family disaster kit which should contain: Flashlights, radio, emergency food, and water, extra blankets, sleeping bags, a fire extinguisher, extra batteries, essential medicines, manual can opener, first aid kit, and emergency heating equipment.

With April Showers, comes the dreaded flooded basement. Basement flooding is not a rare problem. Due to its location, the basement is likely to be flooded during rainy seasons. **So, who needs a sump pump?** If you have a basement that floods you should have one. The sump pump should be placed in the lowest part of your basement and should turn on automatically if the basement starts filling with water. Basement flooding can often be prevented if your sump pump functions properly. Like many other home appliances a sump pump requires maintenance. Clogging is a major issue in sump pump maintenance. If you have a sump pump in your basement, it's likely sitting in a hole, or pit in the basement floor. Over time, a sump pit will accumulate dirt and other debris. It's a good idea to periodically clean your sump pit. Your sump pumps plays an important role in your home so read the manual carefully and know how to keep it in good working order. The best way to avoid damage is to closely follow the guidelines laid out in the owner's manual which provides the necessary instructions for proper pump maintenance and operation. **A sump pump is a wise investment.** Several inches of water can often cause several thousand dollars in damage to basement structures and fixtures, furniture, water heaters and appliances. Wet concrete or brick is tough to dry and the resulting mold and mildew can cause serious health problems

Do you have a carbon monoxide detector in your home? It's now the Law. A New York State law went into effect February 22, 2010 called Amanda's Law, which requires carbon monoxide detectors in all residences, both new and old. Essentially, every single-family or multi-family home as well as each unit in apartment buildings is required, by law to have a carbon monoxide detector. Carbon monoxide detectors **MUST BE LISTED AND LABELED AS COMPLYING WITH UL 2034 ORCAN/CSA 6.19.** Do you know the proper placement of carbon monoxide detectors? The ceiling is the best location for your carbon monoxide detectors, but detectors can be mounted on the wall too. In all cases, stay at least four inches away from corners. They should be located near the sleeping area, where it can wake you if you are asleep. Additional detectors on every level and in every bedroom of a home provide extra protection against carbon monoxide poisoning. Homeowners should remember not to install carbon monoxide detectors directly above or beside fuel burning appliances, as appliances may emit a small amount of carbon monoxide upon start-up. A detector should not be placed within fifteen feet of cooling appliances or in or near very humid areas such as bathrooms.

Keep your detectors properly maintained. Clean your detectors at least once a year, vacuum out the dust. Test your detector at least once a month. Replace batteries twice a year, when you change your clocks in the spring and fall. Working carbon monoxide detectors save lives.

New York State DEC New Burning Regulations went into effect October 14, 2009 taking a step to reduce harmful air pollutants and help prevent wildfires, the New York State Department of Environmental Conservation (DEC) has extended restrictions on the open burning of residential waste. The open burning of residential waste will be prohibited in all communities statewide, regardless of population, with exceptions for burning tree limbs and branches at limited times and other certain circumstances. Burning household trash in burn barrels or piles is now illegal statewide in all cases. Their existing incinerator rule already prohibited burning household trash in wood stoves, fireplaces, and outdoor wood boilers. Burning household trash is dangerous on several levels, trash containing plastics, polystyrene, pressure treated wood and bleached or colored papers produce harmful chemicals when burned. Burning trash emits arsenic, carbon monoxide, benzene, styrene, formaldehyde, lead and hydrogen cyanide, among others. And it is the largest single cause of wildfires in the state. The Town of Hurley recommends that you recycle all appropriate materials such as newspapers, paper, and glass, plastic and compost your organics kitchen and garden waste. Open burning is prohibited with several exceptions including the following: Campfires less than 3 feet in height and 4 feet in length, width and diameter are allowed. Small cooking fires cannot be left unattended and must be fully extinguished, only charcoal or clean dry untreated or unpainted wood can be burned and ceremonial and celebratory bonfires are allowed. **Burning leaves** is banned in New York State, and we encourage you to compost your leaves. In towns such as Hurley, with a total population less than 20,000, you may burn tree limbs with attached leaves. The limbs must be less than 6 inches in diameter and 8 feet in length (also referred to as brush). However, this is not allowed from March 15 through May 14 due to the increased risk of wildfires, open burning is the single greatest cause of wildfires in New York. The DEC still requires a permit to be obtained if you plan to burn brush and live in a town which is totally or partially within the Catskill Park; this includes the towns of Olive, Rochester, Shandaken and Woodstock. For a complete list of the new DEC regulations visit their web site at <http://www.dec.ny.gov/regs/4261.html>

From the Stormwater Coordinator



Go online for Hudson Watershed Atlas. The Hudson River watershed Alliance and Hudson Valley Regional Council have announced a Hudson River Watershed Atlas at www.hudsonwatershed.org. The online mapping service is designed to allow users to visualize, explore, assess and better understand the natural resources of the Hudson River Estuary watershed. The atlas allows users to elect from 20 separate map panels that together provide geographic coverage of Hudson River Estuary watershed. There are various data layers and background layers which can be independently turned on and off. Examples of the data layers include streams, wetlands, FEMA floodplains, potential environmental justice areas, MS4 communities, lakes, ponds, fishing and public access points.

The Conservation Times

Chair: Joan Paccione

March 2010

Keeping the Esopus from Flooding (We Hope)

As of January, the New York City Department of Environmental Protection activated the Ashokan Reservoir Waste Channel to reduce flood risk to the Lower Esopus and improve water quality through reduced turbidity. Because of this winter's heavy snows in the mountains, DEP recently increased its water releases from the Ashokan to 400 million gallons per day from the 300 million earlier this winter. This controlled flow into the Lower Esopus is intended to keep it from being the one big destructive whoosh that this area has witnessed over the years. Let's hope that by the time you read this, it's worked. The Ashokan can hold 127.9 billion gallons of water.

Brush Burning Banned from March 16 - May 14

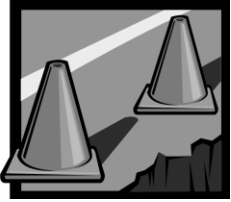
Last October the Department of Environmental Conservation banned virtually all outdoor burning with the exception of tree limbs with attached leaves and less than six inches in diameter and eight feet in length. Because of the increased risk of wildfires, burning of this brush is also forbidden from March 16 through May 14. To report an illegal open fire, call 1-800-TIPP DEC (847-7332).

You Could Make Power Outages Shorter

Remember -- Central Hudson does not know that you have a power outage unless YOU call and tell them! They also claim that the more people who call about a particular outage, the faster the service restoration is likely to be. So don't just sit there thinking that your neighbor will handle things. It's up to each of us to call 452-2700.

Fluorescent Light Bulbs Preserve Clean Air

Every fluorescent light bulb you install prevents approximately 350 pounds of coal from being burned at nearby power plants over the bulb's lifetime.



Hurley Highway Department News

Hurley Highway Department
Supt of Highways: Clyde Russell
P.O. Box 302
Hurley, NY 12443
Phone: (845) 338-4067 Fax:(845) 338-0597
Email: highway@townofhurley.org

Spring is in the air and along with Spring comes St. Patrick's Day

An Irish saying:
May your pockets be heavy
and your heart be light,
May good luck pursue you
each morning and night.

Spring Cleaning – Highway Style

Street Sweeping will begin in early April. Home owners can help our Department work more efficiently in your neighborhood by following two simple suggestions:

- **Please do not sweep the old road grit into a pile on the roadway.** The brooms on the mechanical sweepers cannot clear away piled up material as well as they can sweep the normally distributed grit left by winter sanding.
- **Call our office regarding loose and broken blacktop chunks.** We will put the location on our "Spring Cleanup List". Sweepers cannot efficiently handle this type of material.

The town has over 52 miles of roads to sweep clear of winter grit, so please be patient. We will get to your neighborhood as quickly as possible.



Brush Pick-up

The Hurley Highway Department will provide brush pick-up for residents. Pick-up is intended for private residences, not for commercial landscapers. Brush and/or tree limbs must be placed at curbside, but not in the roadway. Items must be left by Monday of the scheduled week to assure pick-up.

This is not an "on call" or a "return" service. Please adhere to the pick-up schedule below:

- **West Hurley: week of May 3**
- **Old Hurley: week of May 10**



For safety reasons, no pick-ups will be made on State Routes 28 or 375.

Brush – must be bundled, 3 to 6 feet long and weigh less than 40 pounds.

Tree Limbs – must be no longer than 6 - 10 feet long, up to 4 inches in diameter and weigh less than 40 pounds. Place tree limbs butt end to the road.

Total brush pick-up is limited to 2.6 cu. Yards: 6x6x2 feet. Larger piles have disrupted brush schedules to the detriment of other residents.

TOWN HALL SUPERVISOR
 Gary Bellows 331-7474
 Ext 6

JUSTICE COURT
 Hon. Elizabeth Corrado Ext 1
 Hon. John Parker Ext1 (B), 331-0167 (H)

TOWN CLERK/TAX COLLECTOR
 Judy Mayhon Ext 2

SOLID WASTE MANAGER
 Jim Craven Ext 2

CODE ENFORCEMENT/BLDG DEPT
 Glenn Hoffstatter Ext 4

ASSESSOR
 William Marks Ext 5

PLANNING BOARD Ext 335

ZONING BOARD Ext 337

HISTORIAN
 Deana Decker Ext 312

TRIP RESERVATIONS/YOUTH CAMP
 Shirley Paley, Secretary Ext 313

TOWN COUNCIL
 John Gill 331-2836
 Karen Horner 679-6931
 Barbara Zell 338-7686
 Janet Briggs 338-4445

HIGHWAY SUPERINTENDENT
 Clyde Russell 338-4067

TRANSFER STATION
 Closed Wed, Thrus & Sun 338-5412

PARK PHONE 338-9589

ANIMAL CONTROL
 Elaine Grimsey 331-6240

SOCIAL SERVICE OFFICE
 Margaret Holzman 338-0628

FIRE & MEDICAL ASSISTANCE 911

STATE POLICE 338-1702

SHERIFF'S DEPARTMENT 338-3640

HURLEY LIBRARY 338-2092

WEST HURLEY LIBRARY 679-6405